

**DEH** DEALER  
EQUIPMENT  
HEADQUARTERS

1746 N. Kolmar Ave.  
Chicago, IL 60639  
773-289-3235  
[www.dehdirect.com](http://www.dehdirect.com)

Not just a stocking distributor,  
a **partner** to help you grow your business.



# Your DEH Representatives!



Laura Grafer

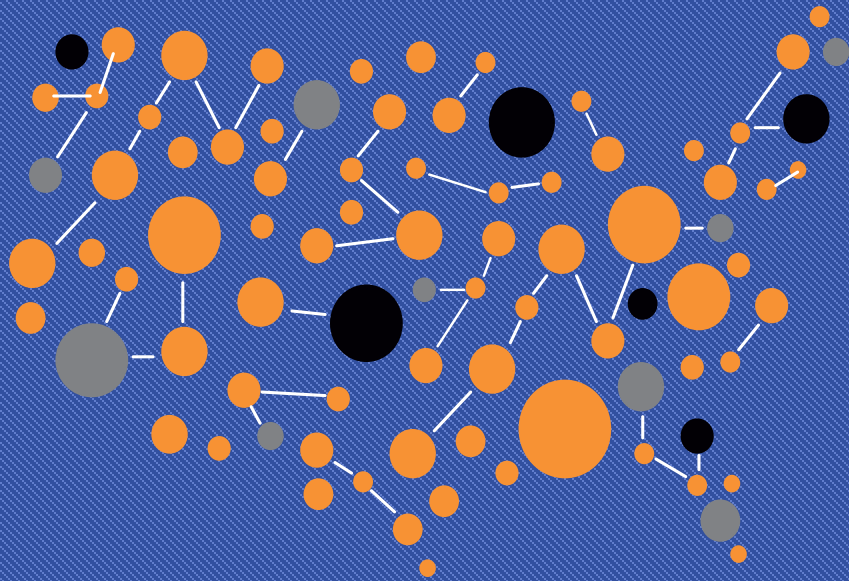
Laura was born and raised in the suburbs of Illinois. She has more than 26 years of overall sales experience. Laura began her career at REB as a sales assistant and became an account executive for DEH in 2020. Laura partners with clients to provide upright frames, step beams, wire decks, post protectors, Bevco chairs and material handling products for picking, assembly, processing, storage and distribution applications to ensure that their project is complete.



Juan Castillo

Juan was born and raised in Chicago, IL. He earned a Business Administration Degree from Robert Morris University. Juan has 20 years experience in the material handling industry. He began his career as a project engineer with REB, then project manager, and has been in a sales position since 2011. Juan has installed mezzanines, modular offices, many pallet rack systems such as drive-in, push backs, selective, etc.

# The DEH Advantage



48-hour quick ship program

Centrally located stocking distributor with 100,000 sq. ft. warehouse

Wholesale cost savings

24/7 access to product information and other resources

Comprehensive support and services

# Quick Ship Program



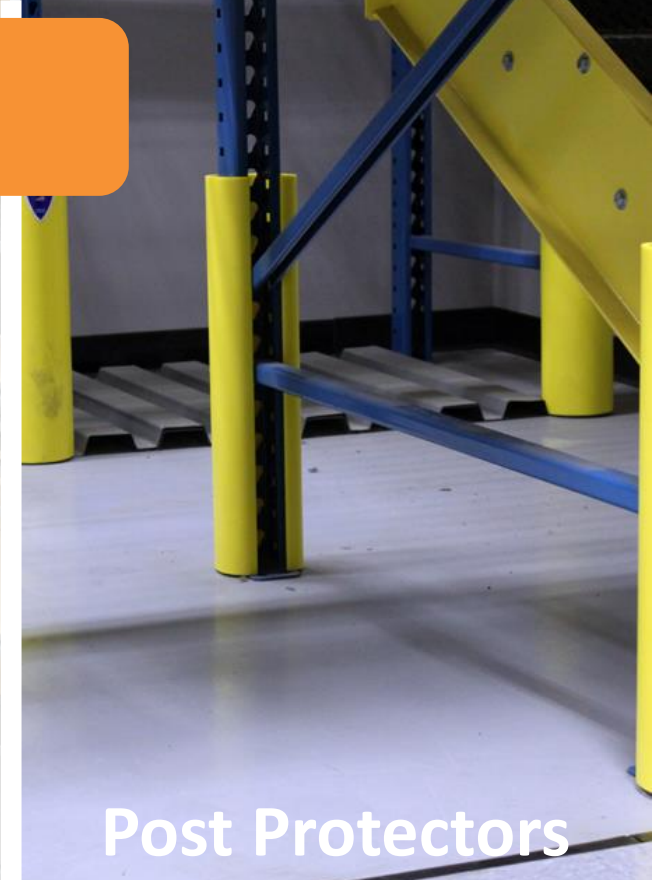
**Pallet Rack**



**Wire Decking**



**Shelving**



**Post Protectors**

- Teardrop style
- Welded green uprights
- Orange beams
- As many as 17 different sizes and gauges typically in stock
- Kits available

- Waterfall style
- 2,500 lb. capacity
- As many as 7 different sizes typically in stock
- Custom sizes and capacities available upon request

- Boltless, easy assembly
- Numerous post and beam sizes in stock
- Powder Coat Finish
- Standard Gray in Stock

- Polyethylene and metal style available
- Sizes to fit all styles of uprights
- Heavy Duty Row End Protectors available upon request

# Pallet Rack: Teardrop Roll Form & Structural Rack

## Popular Roll Form Upright Frames:

- ❑ FS08-42096: 42" X 96" Green Frame; 46.7 lbs.; 16,200# CAP
- ❑ FS08-42-144: 42" X 144" Green Frame; 68.7 lbs.; 16,200# CAP
- ❑ FH20-42-192: 42" X 192" Green Frame; 110.1 lbs.; 23,200# CAP
- ❑ FH20-42-240: 42" X 240" Green Frame; 144.5 lbs.; 23,200# CAP

## Popular Roll Form Step Beams:

- ❑ SB3016096: 96" X 3" Orange Beam; 20.33 lbs.; 3,017# CAP
- ❑ SB4116-096: 96" X 4.125" Orange Beam; 23.69 lbs.; 5,220# CAP
- ❑ SB4616-096: 96" X 4.625" Orange Beam; 25.58 lbs.; 6,037#CAP
- ❑ SB6014144: 144" X 6" Orange Beam; 54.10 lbs.; 6,588# CAP

Wire decks & post protectors are also available



Selective & Double-Deep Selective



Drive-In & Drive-Through



Push Back



Carton Flow



Pallet Flow



Cantilever



All SpaceRAK rack is designed to comply with the most current RMI specifications as applicable.

# Rivet Shelving: Light Duty Applications



DEH to become national stocking distributor of Tri-Boro rivet shelving

## Triboro rivet shelving features

- Boltless, clipless construction
- Various sizes and shelf capacities
- Assembles in minutes
- Powder coated finish: standard color is gray
- Wire decking and particle board available

## Where would you find the need for rivet shelving?

- Retail back rooms
- Parts departments
- Distribution centers
- Hand picking areas

# Support As Needed



Design &  
Engineering

Project  
Management

Permitting  
Support

Installation  
Services

# DEH AT YOUR FINGERTIPS

DEHDirect.com

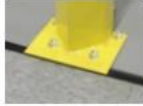




- Access to YOUR discounted wholesale pricing
- Select and submit items for your quote 24/7
- Your contact details will be saved, no need to enter them each time.
- Access to marketing materials to help sell products.

Quick Ship | DEH - Wholesale Wa x

dehdirect.com/quick-ship/

Filter: Pallet Rack Reset Show 10 products

Search:

SKU		Name	Price		Buy
		Pallet Rack	\$0.62	1	Add to cart
		Pallet Rack Accessories - Anchor Bolts, 1/2" x 3-3/4"			
SR101-24FSG		Pallet Rack Accessories - Row Spacer, 24"	\$6.27	1	Add to cart
SR101-18FSG		Pallet Rack Accessories - Row Spacer, 18"	\$5.27	1	Add to cart
SH-35-14		Pallet Rack Accessories - Shim, 3x5x14GA	\$0.60	1	Add to cart
SR10106FSG		Pallet Rack Accessories - Row Spacer, 6"	\$3.44	1	Add to cart





Thank  
You

**Laura Grafer**

**Direct:** 773.289.3237

**Email:** [laurag@dehdirect.com](mailto:laurag@dehdirect.com)

**Juan Castillo Jr**

**Direct:** 773.289.3232

**Mobile:** 773.550.0045

**Email:** [jcastillo@rebstorage.com](mailto:jcastillo@rebstorage.com)